

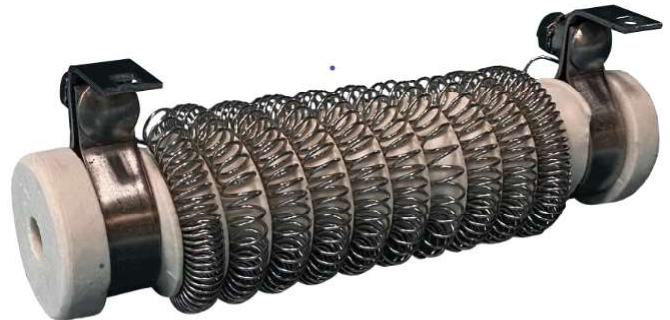
Crohms Series CW

Wirewound Resistor



Product Application

Crohms Series CW wirewound resistors are frequently used for light to medium duty braking of variable frequency drives, speed regulation, wye-delta starting, heating applications, elevator controls, high resistance neutral grounding and any type of AC or DC power circuit. The Series CW resistors are available in resistance values ranging between 0.2 to 300 ohms and corresponding current ranges between 35 and 1 amp.



Product Design

Crohms Series CW wirewound resistors feature a high quality stainless resistor alloy wound into a long spring then wrapped onto a spirally grooved ceramic insulating core. The resistor element is attached at each end of the resistor to a robust stainless steel terminal that is clamped to the core. The open-type design allows the resistor element to come in direct contact with ambient air allowing it to cool more efficiently than enamel coated resistors. The insulating core is produced from cordierite which offers excellent thermal shock resistance and sound mechanical strength. A 3/8" diameter hole runs through the center of the core to accept 1/4 to 5/16" diameter threaded rod to offer simple installation and mounting options.

Product Specifications

Voltage Insulation: 1000 volts

Insulation Resistance (Dry): 1000 MΩ minimum

Resistance Tolerance: +/- 10% standard, Contact factory for if lower tolerances are required.

Coefficient of Resistivity: As the element temperature rises the resistance value will increase. Expect an approximate resistance increase of 5% at full operating temperature.

Operating Temperature: 375°C temperature rise above ambient.

Ambient Temperature: The power ratings are based on a ambient temperature of 40°C. For higher ambient temperatures decrease power ratings approximately 10% for 50°C, 20% for 80°C and 30% for 100°C.

Product Ordering Information

The part number is specified as follows: CW (resistance x 100). As an example, the part number for a 10 ohm, 384 watt wirewound resistor is CW1000. See the table on the following page for a full list of standard part numbers.

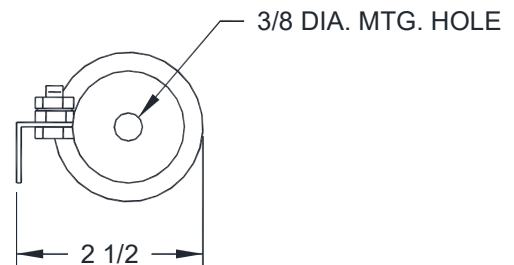
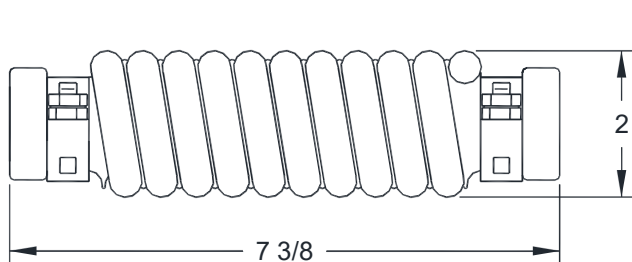
Crohms Series CW

Wirewound Resistor



Product Ratings and Dimensions

PART NUMBER	OHMS	AMPS	WATTS	PART NUMBER	OHMS	AMPS	WATTS
CW20	.20	35.0	250	CW1400	14.0	5.4	408
CW25	.25	32.0	256	CW1500	15.0	5.3	421
CW30	.30	31.0	288	CW1600	16.0	5.1	416
CW35	.35	29.0	294	CW1700	17.0	4.9	408
CW40	.40	28.0	314	CW1800	18.0	4.7	398
CW50	.50	27.0	365	CW2000	20.0	4.6	423
CW60	.60	24.0	346	CW2200	22.0	4.2	388
CW80	.80	21.0	353	CW2400	24.0	4.0	384
CW100	1.0	18.0	324	CW2700	27.0	3.6	350
CW150	1.5	15.0	338	CW3000	30.0	3.4	347
CW200	2.0	13.0	338	CW3500	35.0	3.2	358
CW250	2.5	12.0	360	CW4000	40.0	3.0	360
CW300	3.0	11.0	363	CW4500	45.0	2.5	281
CW350	3.5	10.5	386	CW5000	50.0	2.3	264
CW400	4.0	10.0	400	CW6000	60.0	2.1	264
CW450	4.5	9.2	381	CW7000	70.0	2.0	280
CW500	5.0	8.5	361	CW8000	80.0	1.8	259
CW550	5.5	8.0	352	CW9000	90.0	1.7	260
CW600	6.0	7.6	347	CW10000	100.0	1.6	256
CW650	6.5	7.5	365	CW11000	110.0	1.5	247
CW700	7.0	7.3	373	CW12000	120.0	1.45	252
CW750	7.5	7.2	388	CW13500	135.0	1.35	246
CW800	8.0	7.1	403	CW15000	150.0	1.30	254
CW850	8.5	7.0	417	CW17500	175.0	1.20	252
CW900	9.0	6.7	404	CW20000	200.0	1.10	242
CW1000	10.0	6.2	384	CW22500	225.0	1.05	248
CW1100	11.0	6.0	396	CW25000	250.0	1.00	250
CW1200	12.0	5.8	404	CW27500	275.0	0.95	250
CW1300	13.0	5.6	407	CW30000	300.0	0.90	243



Stainless steel terminals accept #10 hardware.